



## Weather Resistance Shock Pad For Artificial Turf Lawn Solution For EN15330 FIFA 2024 Sports Fields Construction

Our Product Introduction

for more products please visit us on [shockpadunderlay.com](http://shockpadunderlay.com)

### Basic Information

- Place of Origin: China
- Brand Name: TAIHUI
- Certification: FIFA
- Model Number: TP2510K
- Minimum Order Quantity: 1000
- Price: USD
- Packaging Details: Each roll in PE bag
- Delivery Time: 4-7 days
- Payment Terms: T/T,D/P,L/C,D/A
- Supply Ability: 30000-50000sqms per day



### Product Specification

- Features: Durable, Eco-friendly, Shock-absorbing
- Material: Polythene Foam
- Style: Slotted/pattern
- Color: Optional
- Thickness: Optional
- Easy To Install: Yes
- Package: Each Roll In PE Bag
- Durability: Long-lasting
- Fire Resistance: Class A
- Safe For Children: Yes
- Maintenance: Low
- Cost: Highest Costing Performance.
- Installation: Weather Resistance
- Permeability: >3000mm/h
- Water Drainage: >20000



### More Images

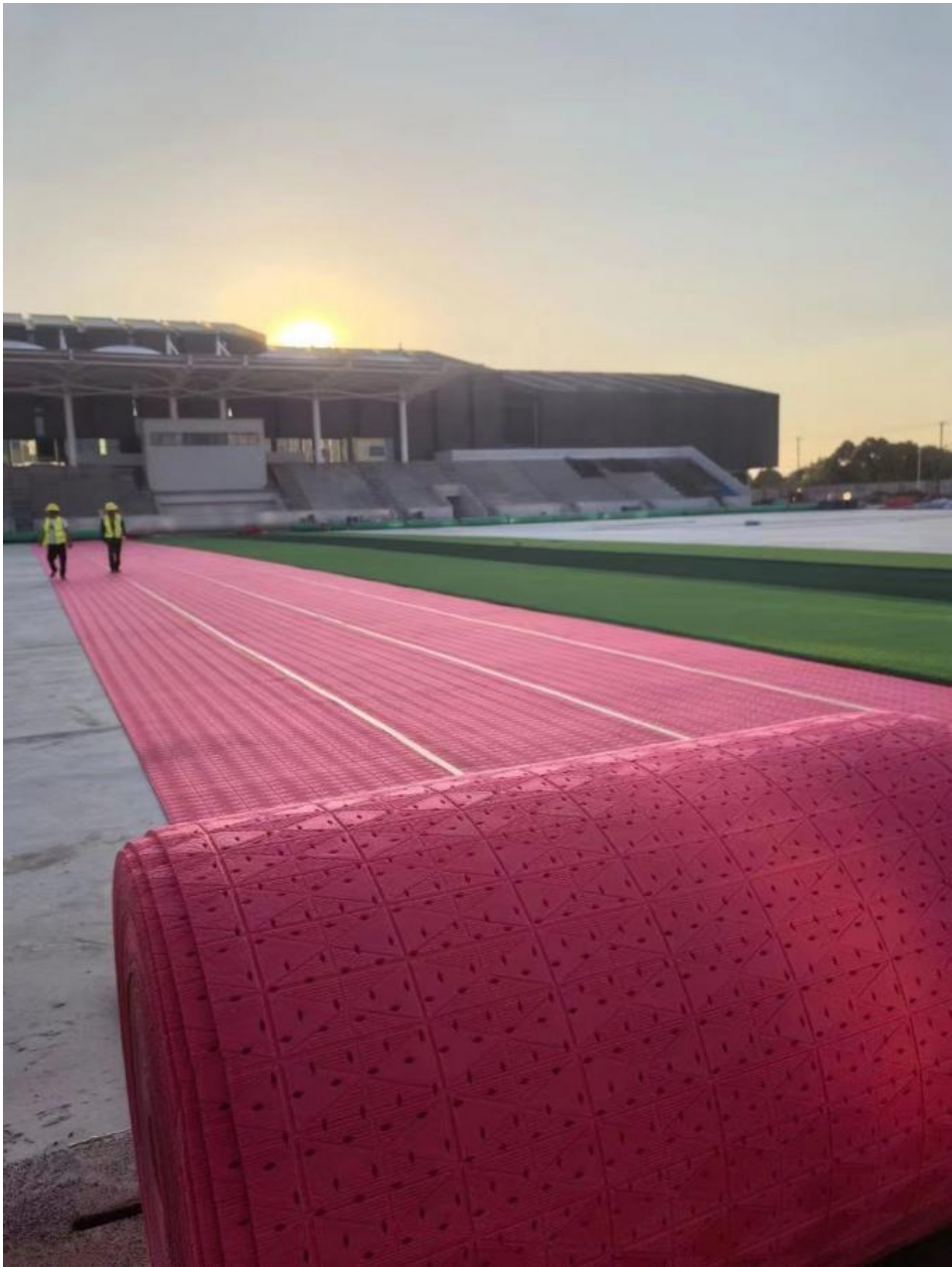


## Product Description

**TAIHUI's Pattern Shock Pad is the preferred foundation for artificial turf fields worldwide.**

**With its optimized drainage grooves and high-resilience foam core, this pad supports superior ball behavior, long-term athlete protection, and low-maintenance field performance — rain or shine.**

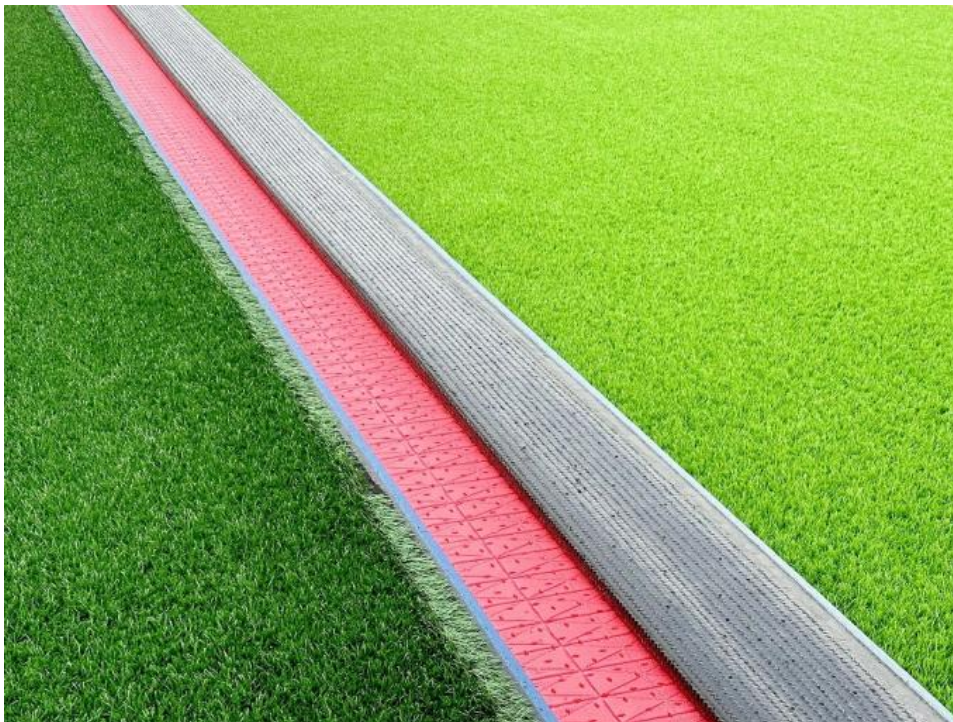




Product Specifications

Feature	Details
Product Name	TAIHUI
Thickness Options	8mm / 10mm / 12mm (Customizable)
Material	Closed-cell cross-linked polyolefin foam (eco-friendly & recyclable)
Roll Size	Width 1.5m x Length 95m (Custom sizes available)
Ball Rebound	≥ 95% (FIFA Quality Pro standard)
Vertical Deformation	4.0 – 6.0 mm
Drainage Design	Cross-directional groove pattern
Drainage Capacity	4000 mm/h
Weather Resistance	UV-proof
Installation Method	Roll-based, with adhesive joints for fast application







## **Why Choose the Pattern Shock Pad?**

### **Rapid Drainage**

Cross-groove design channels rainwater away fast – no puddles, no play delays.

### **Consistent Shock Absorption**

Protects athletes from impact injuries with long-lasting vertical resilience.

### **Dimensional Stability**

No shrinkage, no warping, and no edge lifting – keeps your turf system stable for years.

### **Eco-Friendly Composition**

100% recyclable, odor-free, non-toxic — safe for kids, athletes, and the environment.

### **Time-Saving Installation**

Large roll format and puzzle-like edge design reduce labor costs and project time.

### **Wide Application Range**

Ideal for **football pitches, rugby fields, playgrounds, schools, and landscape turf**

### **Lab-Tested Performance**

Tested to meet and exceed **FIFA, EN** performance standards.

### **All-Weather Durability**

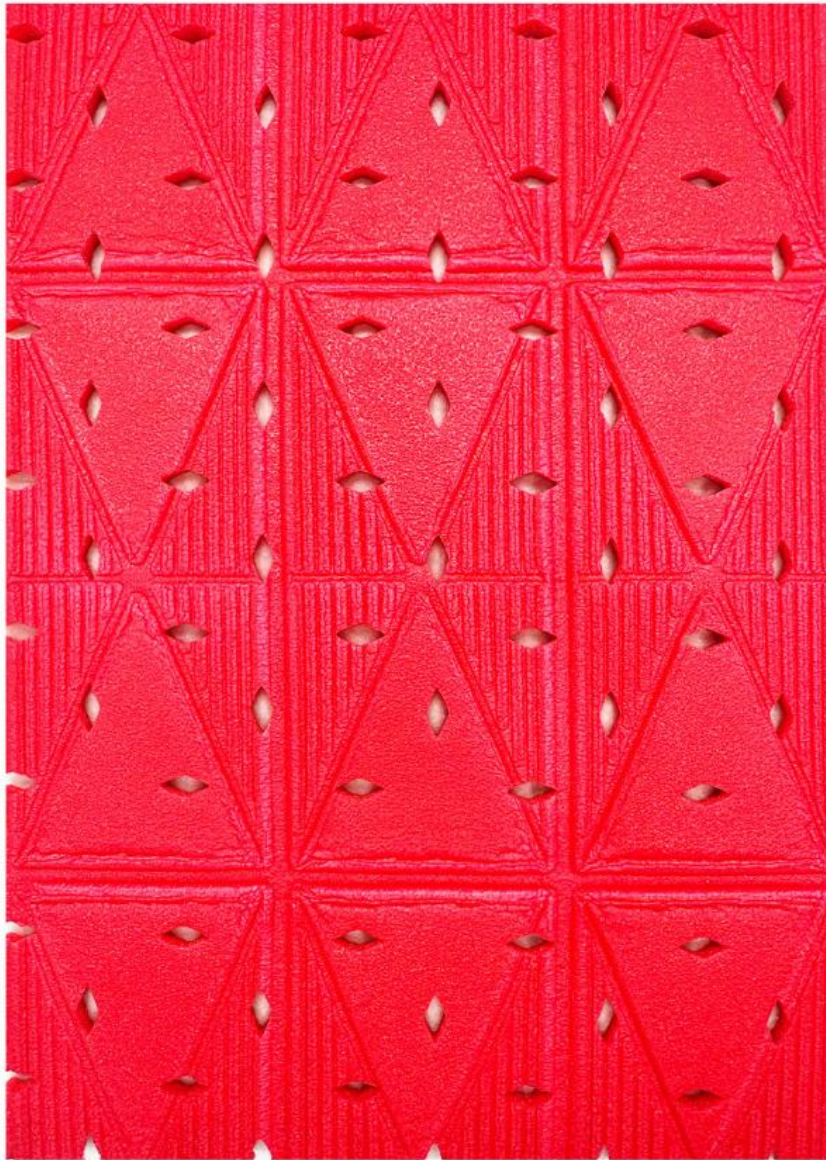
Performs in extreme heat, cold, and wet climates — no compromise in quality.

### **Lower Maintenance Cost**

Efficient drainage reduces waterlogging and turf damage, extending field life.







## WHY CHOOSE TAIHUI SPORTS?

### 1. Proven Product Performance

Our shock pads and TPE infill materials are engineered for durability, safety, and long-term performance. Whether it's a high-intensity football pitch or a school playground, TAIHUI products perform consistently — rain or shine.

# Test Certifications



## 2. Tailored Solutions for Every Project

One-size-fits-all? Not here. We offer customizable thicknesses, materials, and specifications to match your project's unique needs — helping you win bids and impress clients with top-tier quality.



## 3. Reliable, On-Time Delivery

We understand international timelines and deliver accordingly. From production to port, our logistics team ensures every order arrives safely and on schedule — no excuses.





#### 4. Global Experience, Local Understanding

Our clients span Europe, the Middle East, Asia, and Africa. We speak your language (literally and professionally), and we know how to support diverse markets with region-specific requirements.



#### 5. Certified Quality You Can Trust

Our products are rigorously tested and internationally certified. Whether you're looking for shock absorption, drainage efficiency, or eco-safety — TAIHUI meets and exceeds global standards.

#### 6. Professional Support, Every Step of the Way

From your first inquiry to after-sales service, our team is responsive, knowledgeable, and committed to your success. You're not just buying products — you're gaining a reliable partner.

# Installation Instruction of Shock Pad



1. Installation of drainage plate and shock pad



3. Artificial turf laying process



2. Laying of artificial turf



4. Artificial turf laid

## What Our Clients Say

---"We've been using their shock pads for three years now—performance is top-notch, and the support team is always responsive."

— **Project Manager, Sports Facility, Australia**

---"Their professionalism and quality of product helped us win a major tender in Africa. Highly recommend working with them."

— **CEO, Turf Construction Company, Kenya**

---"From inquiry to delivery, everything went smoothly. The team understands international logistics well and always delivers on time."

— **Procurement Officer, Landscaping Company, Germany**

"We switched to their TPE infill last year and haven't looked back. Players love the feel, and it performs great in all weather."

— **Technical Director, Football Club, UAE**



**CHANGZHOU TAIHUI SPORTS MATERIAL CO.,LTD**



13915088459



grace@taihuisports.com



shockpadunderlay.com

Building 3A-602, R&D Hub, Science&education Tower,Wujin District, China.