



10mm 15mm 12mm Artificial Grass Shockpad Underlay FIFA Certified

Our Product Introduction

Basic Information

- Place of Origin: China
- Brand Name: TAIHUI
- Certification: SGS/LABOSPORT/SPORTSLABS
- Model Number: Shock pads
- Minimum Order Quantity: 1,000 sqms
- Price: as per discussion
- Packaging Details: In rolls
- Delivery Time: One week
- Payment Terms: T/T
- Supply Ability: 500,000 sqm per month



Product Specification

- Name: 10mm Shock Pad For Artificial Grass
- Color: Various
- Density: 80kg/m3
- Drainage Design: Water Drainage In 4 Directions
- Installation: Weather Resistance
- Packing Dimension: 83cm*83cm*150cm
- Roll Size: 50m*1.5m Or Tailored For Pitch
- Sports: Football/ Hockey/ Rugby Field/Baseball
- Warranty: 8-10 Years
- Water Drainage: >20000
- Loading: 2,000 Sqms In 20ft
- Weight: 10kg
- Highlight: 12mm Artificial Grass Shockpad,
10mm Shock Pad For Artificial Grass,
10mm Artificial Grass Underlay



More Images



Product Description

10mm12mm15mm Artificial Turf Shock Pad for FIFA Certified field Rugby Hockey

Why artificial turf systems need to adopt shock-absorbing pad?

1. The shock pad helps the artificial turf system provide superior resilience and impact resistance to reduce the injury which makes the artificial turf system comparable to the natural grass.
2. With shock pad underneath, the resilience and impact resistance of the artificial system can be maintained for long service life.

Product Advantages

Material—The perfect combination of new environmental protection resin and rubber foam, rubber has a strong tensile strength and softness, which ensure the strong elasticity and softness brings sense of comfort at the same time. The UV resistant film brings the long service life for the shock pad which is more environmentally friendly, no odor.

Tensile strength—Three-layer structure and characteristics of rubber makes the shock pad with the strong tensile strength, which will protect the product from deformation and damage during the installation. Tensile strength of one-time forming process product is poor.

Cost—Our shock pad can be installed directly on the water stabilized base, and then covered by artificial turf, which helps to save the cost of concrete or asphalt base. Artificial grass pile height 40 mm filled with quartz sand and granules, whose overall cost is lower than the traditional grass pile 50mm without any infill.

Product Innovation Points



Layered compound proportion 4:6, to maximize shock absorption and minimize vertical deformation. With double-sided synchronous grooved technology, to enhance the water permeability while reducing the stress.

Cutting grooves vertically and horizontally with holes to make sure water drainage in four directions, and installation more even.

The perfect combination of rubber and resin, as rubber has strong tensile properties, which can not easily be damaged during the installation.

Adopting a professional ratio of composite process, both to increase the impact of absorption, but also reduce the vertical deformation.

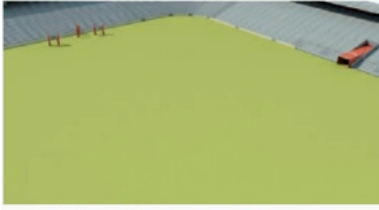
The backing film can enhance the breaking force and it is not easy to be damaged during the installation. It also has excellent UV-resistance and Odor-resistance.

Test Content	Tested by
Performance Test	
Compression Deformation Test	
Water Permeability Test	
Environmental Test	

Our Workshop



Installation Instruction of Shock Pad



1. Installation of drainage plate and shock pad



3. Artificial turf laying process



2. Laying of artificial turf



4. Artificial turf laid



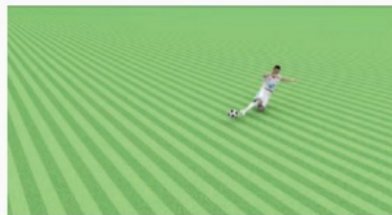
5. Infill the sand



7. The whole picture of the stadium

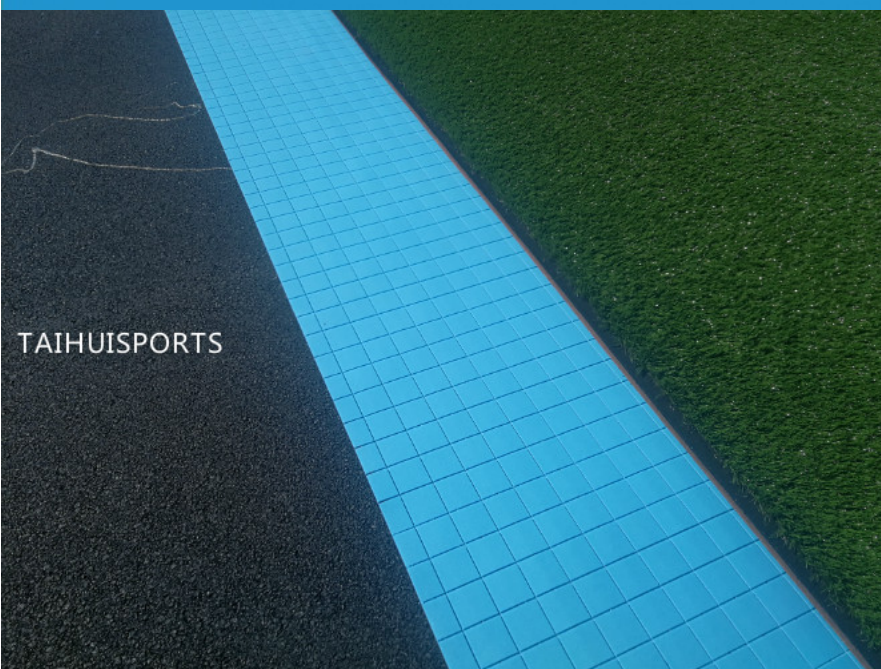


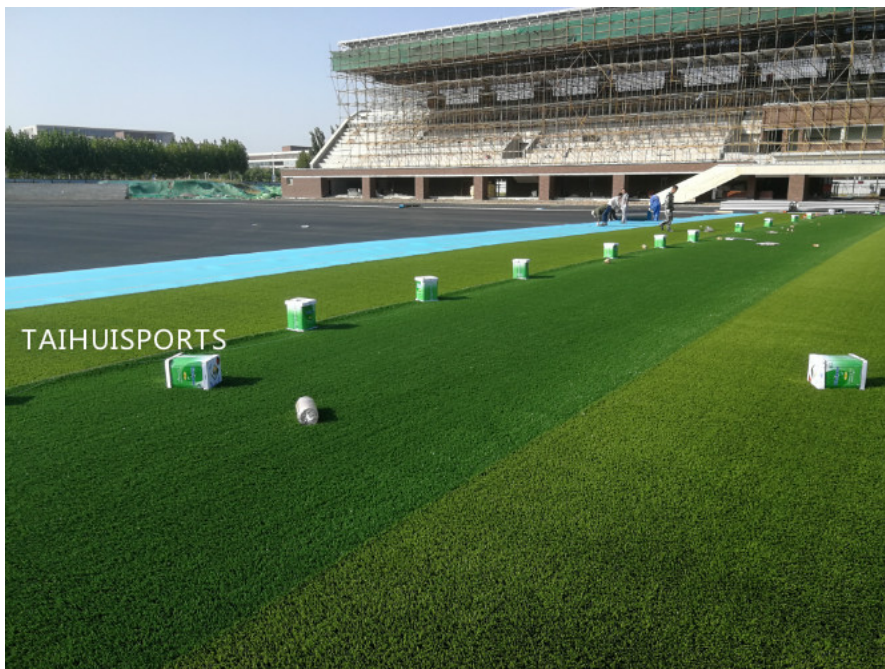
6. Installing the infill granule



8. Site put into use

Project Display





We manufacture shock pad underlay and rubber granule infill to support artificial turf pitch for sports and landscaping. Welcome to visit www.taihuisports.com. Trust we will support you by excellent quality and friendly price. Our products will make your artificial turf pitch fantastic!

Welcome for any inquiry on our products!



CHANGZHOU TAIHUI SPORTS MATERIAL CO.,LTD



13915088459



grace@taihuisports.com



shockpadunderlay.com

Building 3A-602, R&D Hub, Science&education Tower,Wujin District, China.