



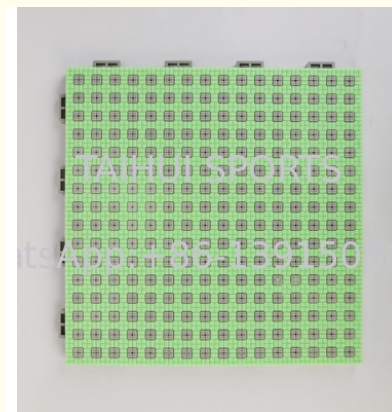
## Healthy Kids 17mm Playground Flooring Tiles Customized Polypropylene Interlocking Tiles

Our Product Introduction

for more products please visit us on [shockpadunderlay.com](http://shockpadunderlay.com)

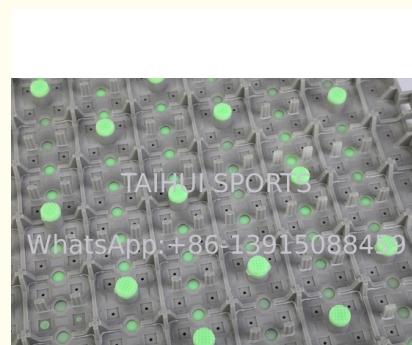
### Basic Information

- Place of Origin: CHINA
- Brand Name: TAIHUI
- Certification: LABOSPORT
- Minimum Order Quantity: 100M2
- Packaging Details: PALLET
- Delivery Time: 10 DAYS
- Payment Terms: T/T
- Supply Ability: 500 M2 per day

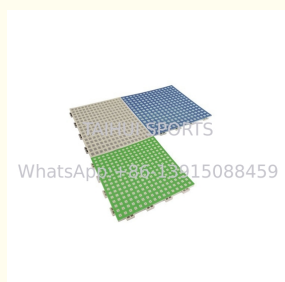


### Product Specification

- Color: Customized, Green, Orange, Blue, Etc. Any Color
- Material: Modified PP And TPE
- Dimension: 340\*340mm
- Thickness: 17mm
- Application: Outdoor Sports Court Flooring, Garage & Shed, Garage
- MOQ: 100 SQMS
- Highlight: 17mm playground flooring tiles, Playground Flooring Tiles Customized, Polypropylene Interlocking Tiles



### More Images



## Product Description

### Multi Purpose Sports Court Floor luminous tennis flooring in tiles for indoor and outdoor basketball flooring sport court tiles

Our Luminous sports flooring tile is an innovative floor, which enjoys wooden floor equivalent performance and can be shiny. By combinations of two or more colors on each single panel, any complex patterns can be shown on the full-sized venue which is beautiful and bringing the ultimate sport experience to players. This type of material is a new environmentally friendly material that is harmless to the human body and has no contamination to the environment.

#### Main performance features

1.	Equivalent performance and sensation to the wooden floor.
2.	Realize the effect of multi-picture shown on small area.
3.	It shows highlighting and magical effects at night.
4.	The flooring surface provides thermal insulation, no dry heat feeling for summer nor frozen feelings for winter.
5.	The design on the full-sized pitch can be customized.
6.	Breaking the technology bottleneck of single material monolithic application by implementing two or more materials with different performance.
7.	Use soft rubber to be the playing surface can protect the human body well, while the hard "PP5" serves as the support and connection structure providing powerful pressure resistance, can withstand stepping for hundreds of billion times. The connections between the snaps are firmly stable.
8.	Deeply modify the hard PP to make it reach the world's recognized contraction ratio, when combined with high accuracy molds, the shrink ratio is only 1: 1.13 (compared to the industry average ratio 1: 1.2), to make sure that the size of each finished product is fixed without discrepancy, and the installation accuracy of large-scale field installation is realized.
9.	The luminous efficiency can reach 5-15 hours / day.
10.	The rubber is heated to the liquid and flow through hard PP, and makes the material into one another after cooling. The bottom rubber is used as a contact surface providing good shock absorption while the hard PP brings excellent ball rebound and nice feeling for players. The strong friction of the rubber prevents the migration of the product well. At the same time, the rubber enjoys very high wear resistance, and the wear index is as high as 340 (consistent with the tire wear index)
11.	The material is solid, durable, and the weight exceeds the same type of product on the market more than double. The Ultra-weight product is not susceptible to stress, and the self-gravity cooperate with the bottom rubber suction cup to make sure the strong adsorption to avoid the natural displacement, hence the outdoor use problems caused by climate change can be well solved.
12.	The unique " " shape design with fast drainage is more suitable for the friction coefficient required by human body. The design height is 17.5 mm to make sure that it is not flooded in the rain, effectively avoiding the soaking of shoes. There are more than 250 holes on each single piece of the panel surface (less than 100 for the existed products in the market), which are uniform and densely designed. The mold making process is strict. The holes are designed to help with the drainage, make sure no splashing water upon stepping under rainy days, and help with the high temperature relief to make sure no bulge on the surface.
13.	Every single piece of panel can be produced with 2 or more colors, achieving more complex and vivid patterns. Relying on the luminous effect at night, the personalized design of the product is very prominent.
14.	The negative oxygen ion of the product releases can be greater than 20000(ions/cm <sup>3</sup> ). The exercise on the flooring surface can increase its negative oxygen ions, which helps players to reduce and get rid of fatigue quickly.
15.	Adopting the automobile headlamp molding making process to make sure the molding accuracy, achieving the error range less than 1/10000.
16.	Abandon the hollow panel design, use solid panel to reduce noise and produce comfortable sound effect.
17.	The floor surface will effectively eliminate static electricity during sports and keep the rubber part clean at the same time.
18.	Scope of application: Basketball court, Kindergarten, Fitness Track, Fitness Plaza, Factory, Family Use.

#### Product Specification

Item	Value
Color	Customized
Place of Origin	China
Brand Name	TAIHUI
Sport	Indoor outdoor sports
Material	Polypropylene(PP)+TPE

Color	Green, orange, blue, etc. any color
Surface Treatment	Simple Color, Anti-slip
Size	340mm*340mm*17mm
Weight	300g
Certificate	ISO, SGS, CE, BWF, ITTF, ITF, ect.
Application	Outdoor sports court flooring, Garage & Shed, Garage
Product Name	Luminous dance Indoor outdoor Multi Purpose Sports Court Floor Tile

### Product Application



**CHANGZHOU TAIHUI SPORTS MATERIAL CO.,LTD**



13915088459



grace@taihuisports.com



shockpadunderlay.com

Building 3A-602, R&D Hub, Science&education Tower,Wujin District, China.