



Customized Artificial Grass Shockpad 20mm 30mm 40mm Fake Grass Underlay

Our Product Introduction

for more products please visit us on shockpadunderlay.com

Basic Information

- Place of Origin: CHINA
- Brand Name: TAIHUI
- Certification: SGS/LABOSPORT/SPORTSLABS
- Model Number: T2004B/2006K
- Minimum Order Quantity: ACCORDING TO THE DEMAND FROM THE CUSTOMER
- Price: By negotiation
- Packaging Details: One roll packed in recyclable PE bag
- Delivery Time: One week after received the deposit
- Payment Terms: L/C, T/T
- Supply Ability: 500,000 sqms per month



Product Specification

- Application: Artificial Turf Sports Field
- Structure: Laminated Layers
- Length: Tailored For Pitch
- Thickness: Customized
- Color: Black And Blue Or Customized
- Installation: Very Convenient
- Highlight: Customized Artificial Grass Shockpad, Artificial Grass Shockpad 20mm, 40mm Fake Grass Underlay



More Images



Product Description

20mm 30mm 40mm Thickness Fake Grass Underlay for Playground sports fields HIC Impact Tested Safty Sport field

Our shock pad enjoys advantages as below:

Structure	Made of three layers with film on the backing to enhance the tensile strength and UV-resistance.
Material	Environmentally friendly resin, no odor.
Appearance	Black and blue or customized according to the demand of customer
Character	Light in weight, closed celled without absorbing water.
Spec	Various density and thickness suit for all pitch standard.
Installation	Easy and good-looking installation.
Test report	Labosport & SGS& Sportslabs
Function	Reduce the overall cost of the artificial grass system, enhance the performance, extend the service life of the system

Comparison between FOAM shock pad and IN-SITU shock pad

	FOAM SHOCK PAD	IN-SITU SHOCK PAD
PRICE	CHEAP	HIGH
INSTALLATION COST	CHEAP	HIGH
INSTALLATION TIME	VERY FAST	LONGER
THICKNESS	THIN	THICK
WEIGHT	LIGHT	HEAVY
FLATNESS	EVENLY	NOT EVENLY
WATER PERMEABILITY	VERY FAST	SLOW
RECYCLABLE	EASY	DIFFICULT
ENVIRONMENTAL FRIENDLY	YES	NO

Test Certifications



Scope of Application



Football



Baseball



Rugby



Hockey



Playground



Golf

Our Workshop



Installation Instruction of Shock Pad



1. Installation of drainage plate and shock pad



3. Artificial turf laying process



2. Laying of artificial turf



4. Artificial turf laid



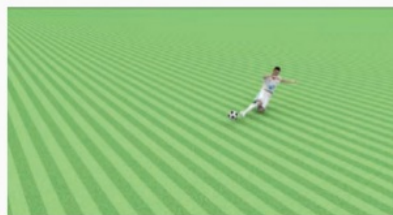
5. Infill the sand



7. The whole picture of the stadium



6. Installing the infill granule



8. Site put into use

Why Should You Choose Us?

1. We offer outstanding products

High quality and reasonable price.

Installation guide and considerate service

Take care of the whole process from ordering, production, transport, installation and after-sale service

Strict inspection on the production and make sure the good quality of each batch

2. Choose us you can get

Professional quality control system, ensure each package with our best quality.

Perfect production line, ensure delivery on time.

Outstanding export teamwork, ensure thorough after-sale services.

We know about foreign market, "Create Happy Sports" is our aim. Your trust, we treasure.

3. Please Note

Shock pad length is tailored based on the artificial grass pitch dimension or customers' special requests.

Installation of the shock pad shall be in the same direction of the artificial grass

For more optional details, please contact Changzhou Taihui sports Material Co., Ltd

Any details of the Shock pad and infill granule should subject to our final confirmation before ordering.

4. Payment & Delivery

Payment term: 30% DEPOSIT AND BALANCE AGAINST THE B/L

Port: Shanghai, China

Delivery Time: 10-15 Days after receiving the deposit payment

5. Our Advantages

Leading Chinese manufacturer for shock pad and infill granule in the artificial grass industry.

SGS Certificated.

LABOSPORT Certificated.

We are committed to serve the global market, who is undoubtedly the most advanced plant among the industry

- ² Modern logistics system
- ² Strict purchasing control
- ² Secure storage environment
- ² Extensive capabilities
- ² Professional production line
- ² First-class environment
- ² Automatic packing production line

FAQ

1. Q: Can I order sample?

A: Yes, we accept sample for trial order.

2. Q: What's the delivery time?

A: It usually takes about 10 days. But the exact delivery time is different for different order quantity.

3. Q: Can I use my logo on the product?

A: Yes, we can make the customers' logo on the package

5. Q: What is payment

A: T/T or L/C.

Project Display





We manufacture shock pad underlay and rubber granule infill to support artificial turf pitch for sports and landscaping. Welcome to visit www.taihuisports.com. Trust we will support you by excellent quality and friendly price. Our products will make your artificial turf pitch fantastic!

Welcome for any inquiry on our products!



CHANGZHOU TAIHUI SPORTS MATERIAL CO.,LTD



13915088459



grace@taihuisports.com



shockpadunderlay.com

Building 3A-602, R&D Hub, Science&education Tower,Wujin District, China.