



## Impact Resistant Turf Shock Pads Closed Cell PE Foam Artificial Turf Layers

### Our Product Introduction

#### Basic Information

- Place of Origin: CHINA
- Brand Name: TAIHUI
- Certification: SGS/LABOSPORT/SPORTSLABS
- Minimum Order Quantity: ACCORDING TO THE DEMAND FROM THE CUSTOMER
- Price: By negotiation
- Packaging Details: One roll Packed in recyclable PE bag
- Delivery Time: 10 days after received the deposit
- Payment Terms: L/C, T/T
- Supply Ability: 500,000 sqms per month



#### Product Specification

- Material: Closed Cell PE Foam
- Color: Black And Blue Or Customized
- Length: 50 Meter Or According To The Specific Pitch
- Installation: Very Convenient
- Weight: 700 G/m2
- Highlight: **Impact Resistant Turf Shock Pads, SGS Turf Shock Pads, PE Foam Artificial Turf Layers**



## Product Description

### Premium Resilience & Impact Resistance: Shock-Absorbing Pad for Artificial Turf Systems

#### Why artificial turf systems need to adopt shock-absorbing pad?

1. The shock pad helps the artificial turf system provide superior resilience and impact resistance to reduce the injury which makes the artificial turf system comparable to the natural grass.
2. With shock pad underneath, the resilience and impact resistance of the artificial system can be maintained for long service life.

#### Why Should You Choose Us?

##### We offer outstanding products

High quality and reasonable price.

Installation guide and considerate service

Take care of the whole process from ordering, production, transport, installation and after-sale service

Strict inspection on the production and make sure the good quality of each batch

##### Choose us you can get:

Professional quality control system, ensure each package with our best quality.

Perfect production line, ensure delivery on time.

Outstanding export teamwork, ensure thorough after-sale services.

Well know about foreign market, "Create Happy Sports" is our aim. Your trust, we treasure.

##### Product Advantages

Increases available time of use
Improves performance and safety
Non-toxic, odorless and environmentally-friendly.
Improve the water permeability, will not affect the performance after rainfall.
High performance quality
Consistent performance over time and use
Our shock pad can be installed directly on the water stabilized base, and then covered by artificial turf, which helps to save the cost of concrete or asphalt base.
Light in weight, one site can be installed in one day.
Elegant appearance and strong sense of comfort

##### Product Innovation Points

Layered compound proportion 4:6, to maximize shock absorption and minimize vertical deformation. With double-sided synchronous grooved technology, to enhance the water drainage in four directions while reducing the stress.
Cutting with holes to make sure water drainage in four directions, and installation more even.
The perfect combination of rubber and resin, as rubber has strong tensile properties, which can not easily be torn during the installation
Adopting a professional ratio of composite process, both to increase the impact of absorption, but also reduce the vertical deformation.
The backing film can enhance the breaking force and it is not easy to be damaged during the installation. It also has excellent UV-resistance and Odor-resistance.

## Test Certifications



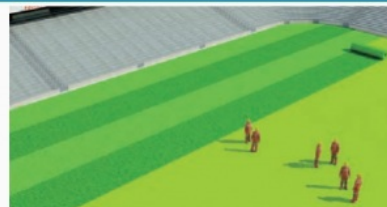
## Our Workshop



## Installation Instruction of Shock Pad



1. Installation of drainage plate and shock pad



3. Artificial turf laying process



2. Laying of artificial turf



4. Artificial turf laid



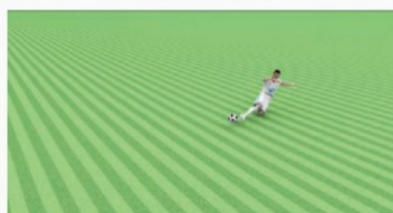
5. Infill the sand



7. The whole picture of the stadium



6. Installing the infill granule



8. Site put into use

### Please Note

Shock pad length is tailored based on the artificial grass pitch dimension or customers' special requests.  
 Installation of the shock pad shall be in the same direction of the artificial grass  
 For more optional details, please contact Changzhou Taihui sports Material Co.,Ltd  
 Any details of the Shock pad and infill granule should subject to our final confirmation before ordering.

## Project Display



We manufacture shock pad underlay and rubber granule infill to support artificial turf pitch for sports and landscaping. Welcome to visit [www.taihuisports.com](http://www.taihuisports.com). Trust we will support you by excellent quality and friendly price. Our products will make your artificial turf pitch fantastic!

Welcome for any inquiry on our products!



**CHANGZHOU TAIHUI SPORTS MATERIAL CO.,LTD**



13915088459



[grace@taihuisports.com](mailto:grace@taihuisports.com)



[shockpadunderlay.com](http://shockpadunderlay.com)

Building 3A-602, R&D Hub, Science&education Tower, Wujin District, China.