



10mm 15mm 20mm 25mm Artificial Grass Shock Pads 30kgs 50kgs 70kgs Density Prefabricated ShockAbsorbing Layer

Our Product Introduction

Basic Information

- Place of Origin: China
- Brand Name: TAIHUI
- Certification: SGS/LABOSPORT/SPORTSLABS
- Model Number: T3004B/3006K
- Minimum Order Quantity: 1,000 sqms
- Price: By Negotiation
- Packaging Details: Each roll packed in recyclable PP bag
- Delivery Time: One week after received the deposit
- Payment Terms: T/T
- Supply Ability: 500,000 sqms per month



Product Specification

- Product Name: 10mm 20mm 30mm Artificial Grass Shock Pads 30kgs 50kgs 70kgs Density Prefabricated ShockAbsorbing Layer
- Application: Landscaping, Outdoor& Gardens, Swimming Pool, Ect
- Color: At Your Option
- Length: Tailored For Pitch
- Thickness: 10mm/20mm/30mm
- Tensile Strength (Horizontal): >0.30
- Package: Each Roll In PE Bag
- Material: PE RESIN
- Service Life: More Than 20 Years
- Highlight: 30mm Artificial Grass Shock Pad,
20mm Artificial Grass Shock Pad,
10mm grass shock pad underlay



More Images



Product Description

10mm 15mm 20mm 25mm Artificial Grass Shock Pads 30kgs 50kgs 70kgs Density Prefabricated Shock Absorbing Layer

Till now we have joined more than 3,000 professional sports fields construction with our performance shock pad underlay and TPE infill granule as a turf system, as well as landscaping and playground application. Please contact us freely if you have the demand of the material, we hope to be one of your alternative option and provide favors.

Comparison between FOAM shock pad and IN-SITU shock pad

	FOAM SHOCK PAD	IN-SITU SHOCK PAD
PRICE	CHEAP	HIGH
INSTALLATION COST	CHEAP	HIGH
INSTALLATION TIME	VERY FAST	LONGER
THICKNESS	THIN	THICK
WEIGHT	LIGHT	HEAVY
FLATNESS	EVENLY	NOT EVENLY
WATER PERMEABILITY	VERY FAST	SLOW
RECYCLABLE	EASY	DIFFICULT
ENVIRONMENTAL FRIENDLY	YES	NO




Product Specifications

Name	Model	Density	Structure	Thickness	Package	Warranty year
Shock pad	T3004B/3006K	30kg/m ³	3 layers	8-30mm	1.5m fixed width, one roll in PE bag is one package	20 years
	T2504B/2506K	50kg/m ³	3 layers			
	T2004B/2006K	70kg/m ³	3 layers			
	T3010G	30kg/m ³	1layer			
	T2510G	50kg/m ³	1layer			
	T2010G	70kg/m ³	1layer			

* Color Thickness and roll length can all be customized according to the demand of customers

Test Certifications



Test Content	Tested by
Performance Test	
Compression Depression Test	
FIFA laboratory Test	
UV Test	
Permeability Test	
Environmental Test	

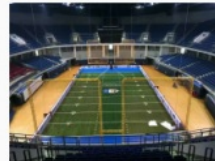
Scope of application



Football



Baseball



Rugby



Hockey



Playground

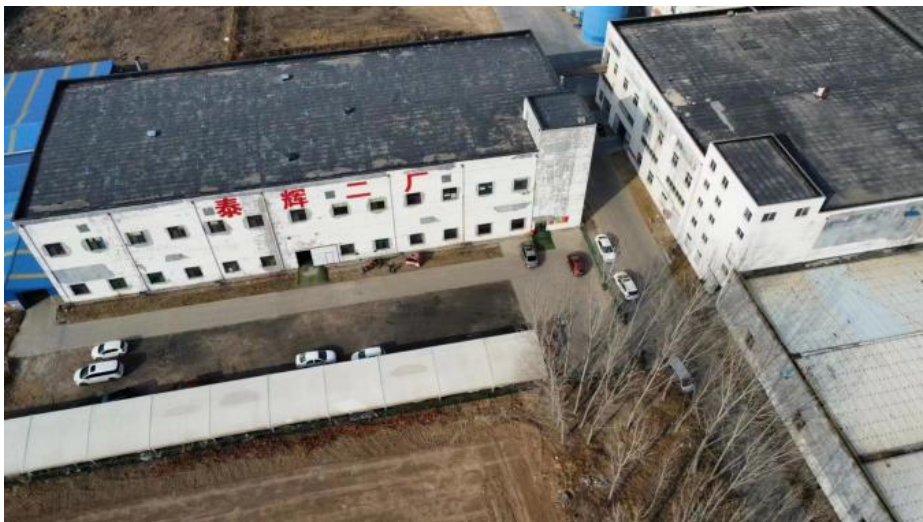


Golf

Our Certificate



Our Workshop



We are committed to serve the global market, who is undoubtedly the most advanced plant among the industry.

- * Modern logistics system
- * Strict purchasing control

- * Secure storage environment
- * Extensive capabilities
- * Professional production line
- * First-class environment
- * Automatic packing production line

FAQ

1. Q: Can I order sample?

A: Yes, we accept sample for trial order.

2. Q: What's the delivery time?

A: It usually takes about 10 days. But the exact delivery time is different for different order quantity.

3. Q: Can I use my logo on the product?

A: Yes, we can make the customers' logo on the package

4. Q: What is payment

A: T/T or L/C.

Why Should You Choose Us?

1. We offer outstanding products

High quality and reasonable price.

Installation guide and considerate service

Take care of the whole process from ordering, production, transport, installation and after-sale service

Strict inspection on the production and make sure the good quality of each batch

2. Choose us you can get

Professional quality control system, ensure each package with our best quality.

Perfect production line, ensure delivery on time.

Outstanding export teamwork, ensure thorough after-sale services.

We'll know about foreign market, "Create Happy Sports" is our aim. Your trust, we treasure.

3. Please Note

Shock pad length is tailored based on the artificial grass pitch dimension or customers' special requests.

Installation of the shock pad shall be in the same direction of the artificial grass

For more optional details, please contact Changzhou Taihui sports Material Co.,Ltd

Any details of the Shock pad and infill granule should subject to our final confirmation before ordering.

Project Display





Trust we will support you by excellent quality and friendly price. Our products will make your artificial turf pitch fantastic!

Welcome for any inquiry.



CHANGZHOU TAIHUI SPORTS MATERIAL CO.,LTD



13915088459



grace@taihuisports.com



shockpadunderlay.com

Building 3A-602, R&D Hub, Science&education Tower,Wujin District, China.